



325 

SEVENTH

AT LIBERTY PLACE

CBRE


MCB
REAL ESTATE

ARTEMIS
REAL ESTATE PARTNERS



A mark in history.

Constructed in 1882, the 6-story, Queen Anne style historic portion of 325 Seventh was originally built to house the Fireman's Insurance Company of Washington, DC. In its heyday, the building played host to iconic figures and exemplified the architecture of the Victorian-era neighborhood. Today, through historic preservation and the addition of 12 floors of modern office space, 325 Seventh stands as a historic gem, providing classical charm to the surrounding streetscape.



The Neighborhood

Greatness all around you

An exceptional workplace experience extends beyond the building itself. From casual eats to Michelin Star restaurants, national museums to world-class entertainment venues, 325 Seventh leaves nothing to be desired.



5-minute walk to Capital One Arena, D.C.'s premier entertainment venue with 200+ events hosted every year.



Within a 10-minute walk:

35+
Full-Service
Restaurants

35+
Fast Casual
Eateries and
Coffee Shops

6+
World-Class
Entertainment
Venues

40+
Retailers

13+
Museums

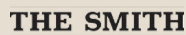
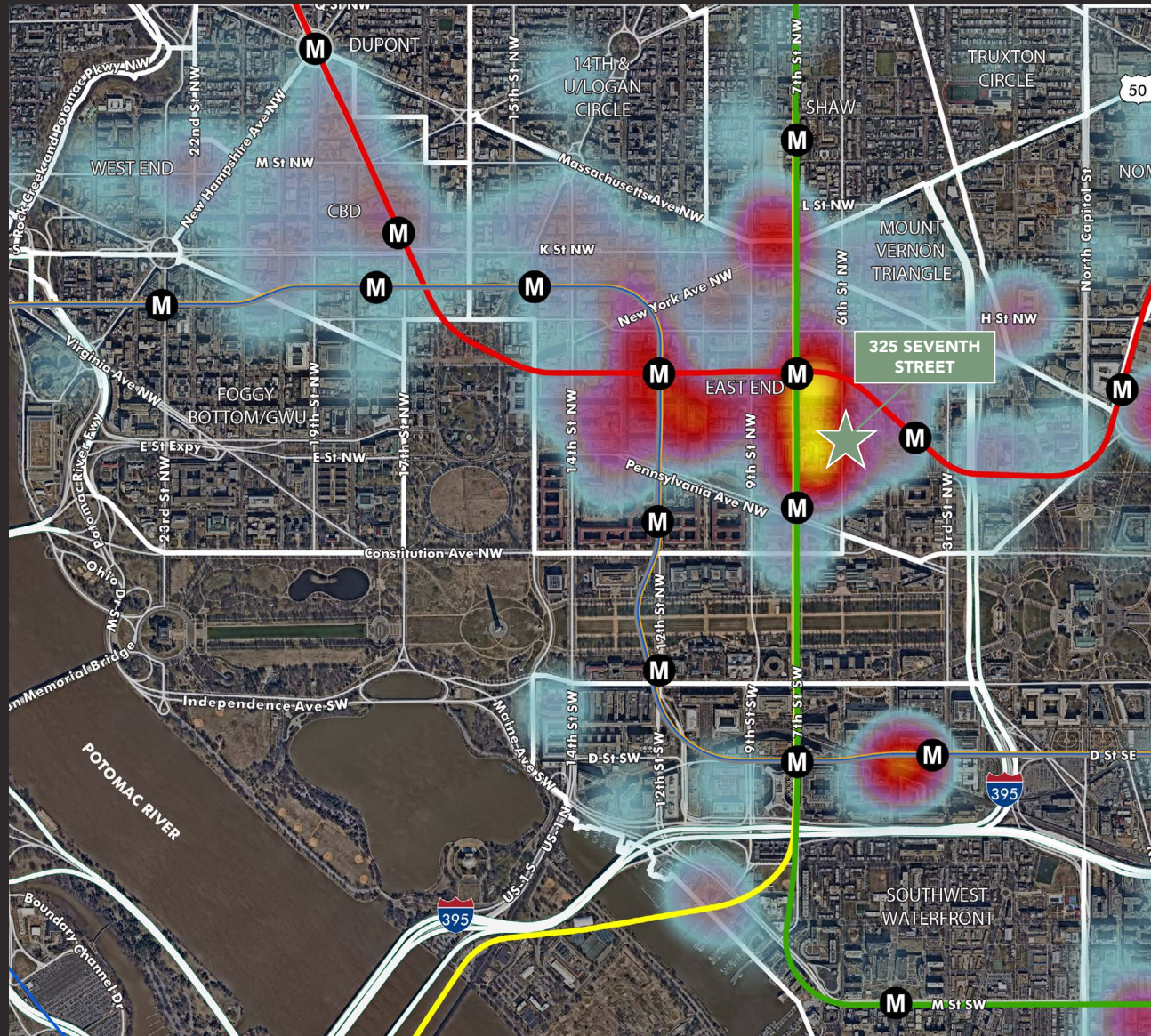
10+
Hotels



Location, Location, Location!

Retail Hot Spot

325 Seventh is located along the most retail-dense corridor in the city.



Optimal Location

Within a 1/2 mile of 325 Seventh

1 MIN. WALK

FROM NAVAL ARCHIVES
METRO STATION  

6 MIN. WALK

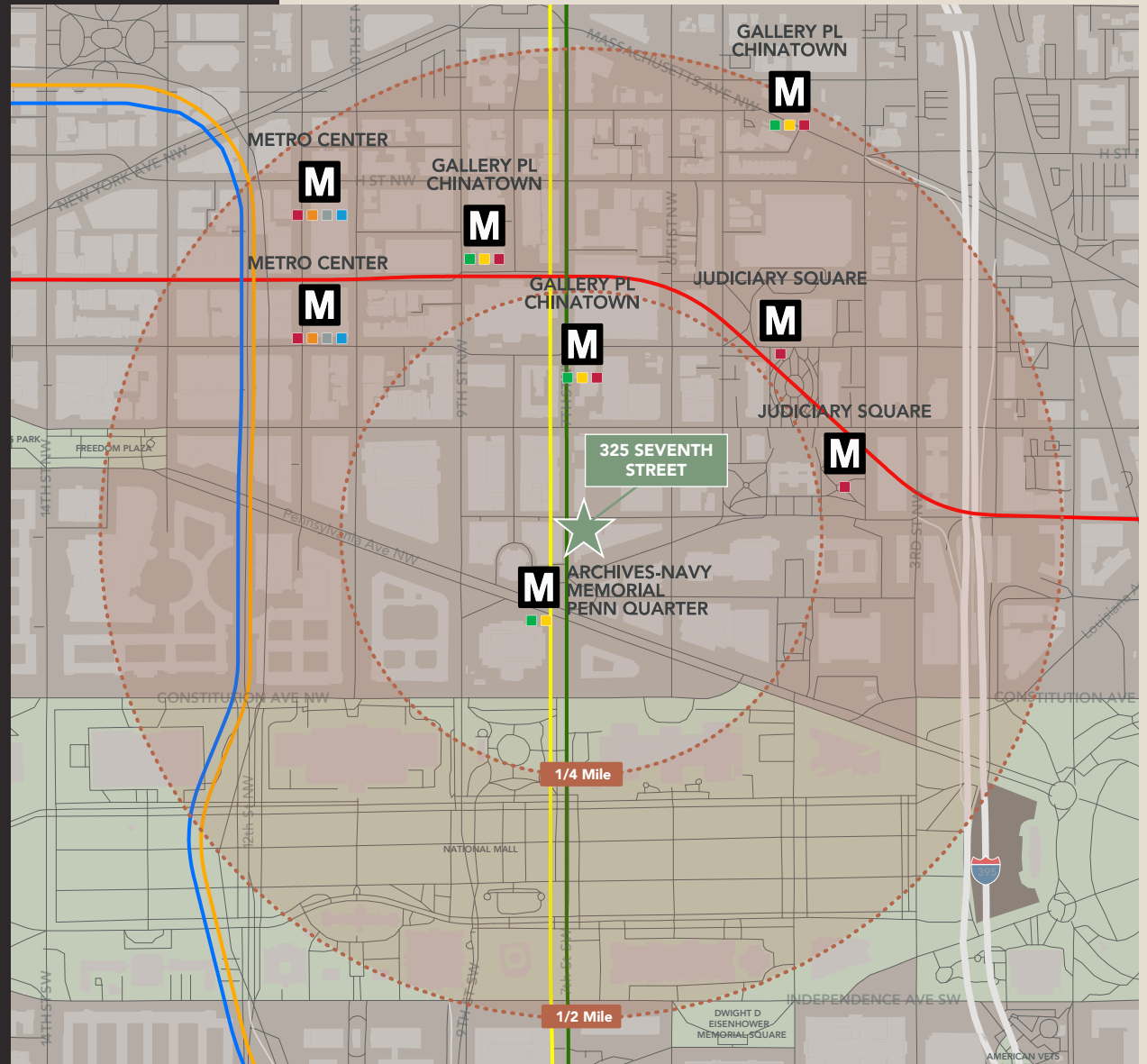
GALLERY PLACE-
CHINATOWN METRO   

7 MIN. WALK

JUDICIARY SQUARE
METRO STATION 

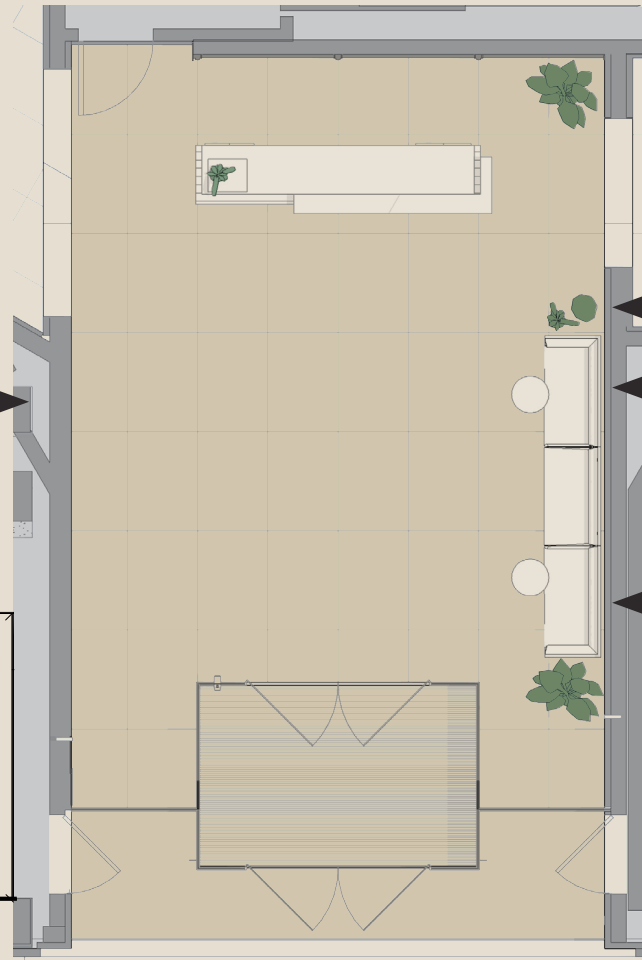
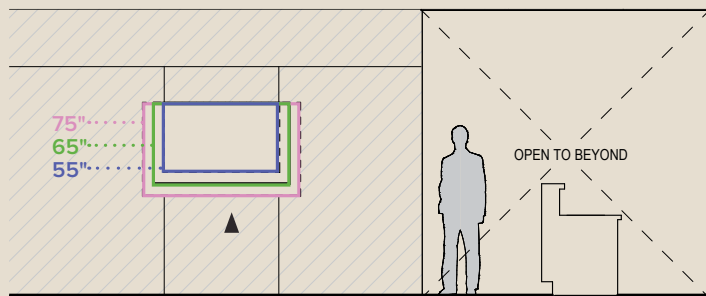
10 MIN. WALK

METRO CENTER
METRO STATION    



Lobby Updates Coming Soon!

Samsung Frame provides tenants with branding opportunities and rotating artwork



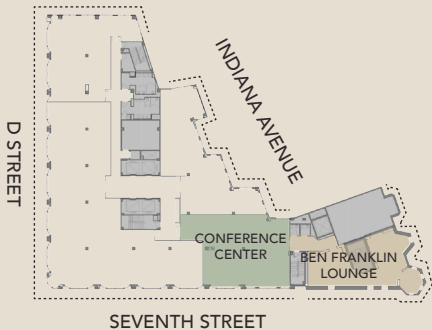
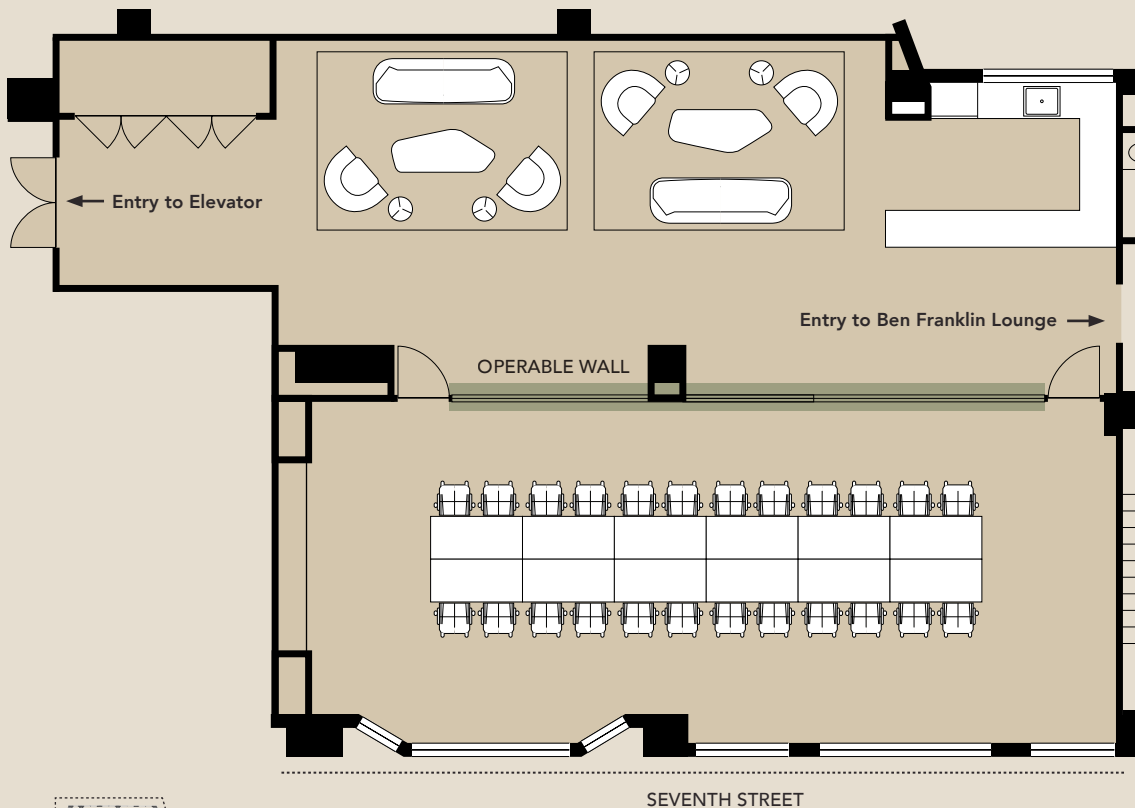
New furniture and planters create a hospitality-focused space for tenants and visitors

SIXTH FLOOR

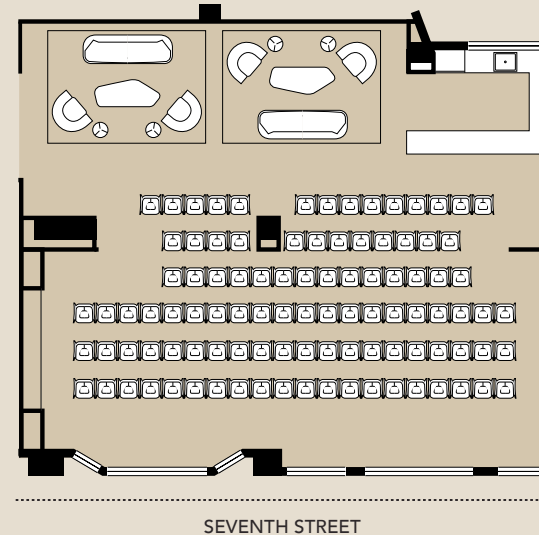
Brand New Conference Center

Flexible Layout Options

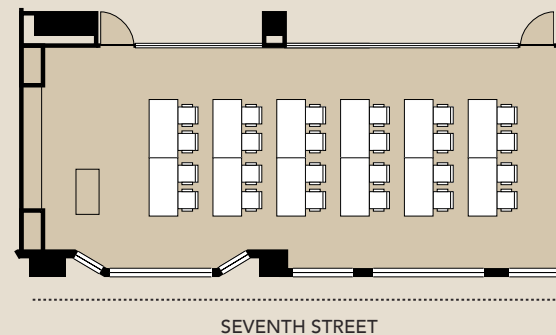
Boardroom – 24 Seats



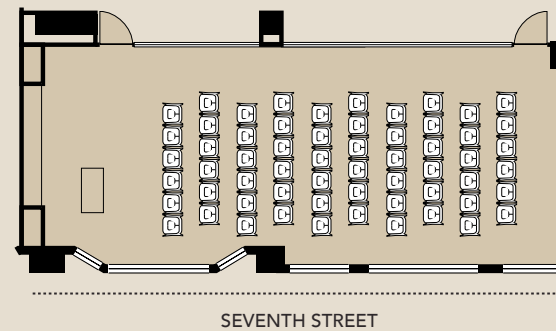
Lecture – 100 Seats



Classroom – 24 Seats



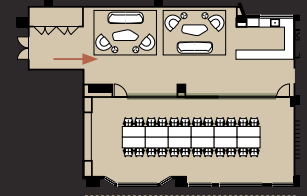
Seminar | 54 Seats



..... WINDOW LINE



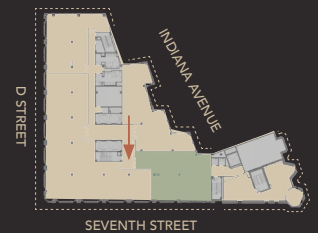
Conference Center Lounge & Kitchen



SEVENTH STREET

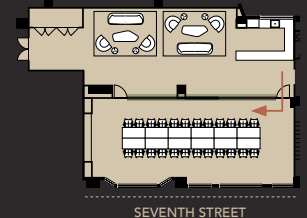


Conference Center Entry





Conference Room

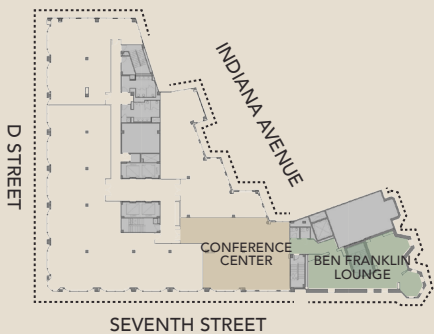
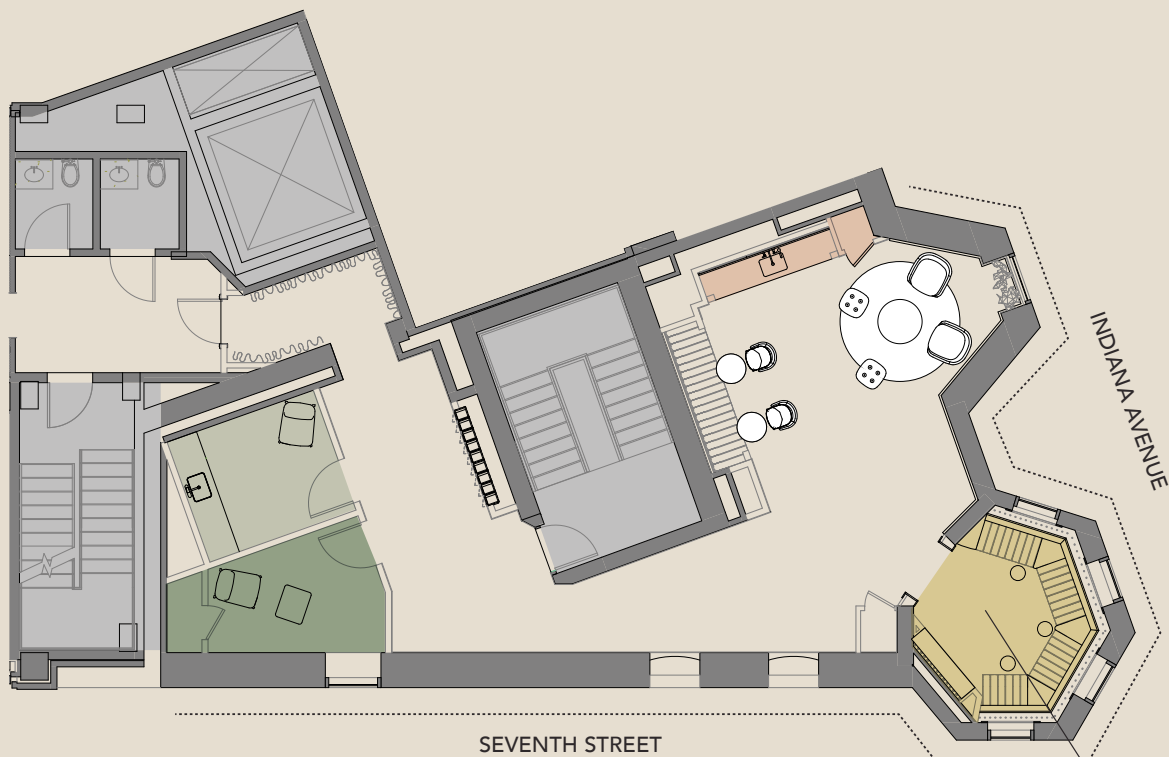


SEVENTH STREET

SIXTH FLOOR

Ben Franklin Lounge

Wellness Room ○ | Meditation Room ● | Ben Franklin Library ○ | Hospitality Bar ○

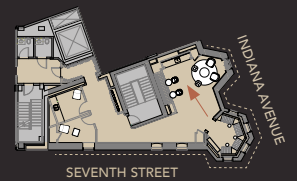


Ben Franklin Library

..... WINDOW LINE



Ben Franklin Lounge



SEVENTH STREET

Expansive Roof Terrace

Unobstructed views of the National Mall and The Capitol



Meeting Room



Catering Kitchen



Restroom Facilities

New Rooftop Upgrades

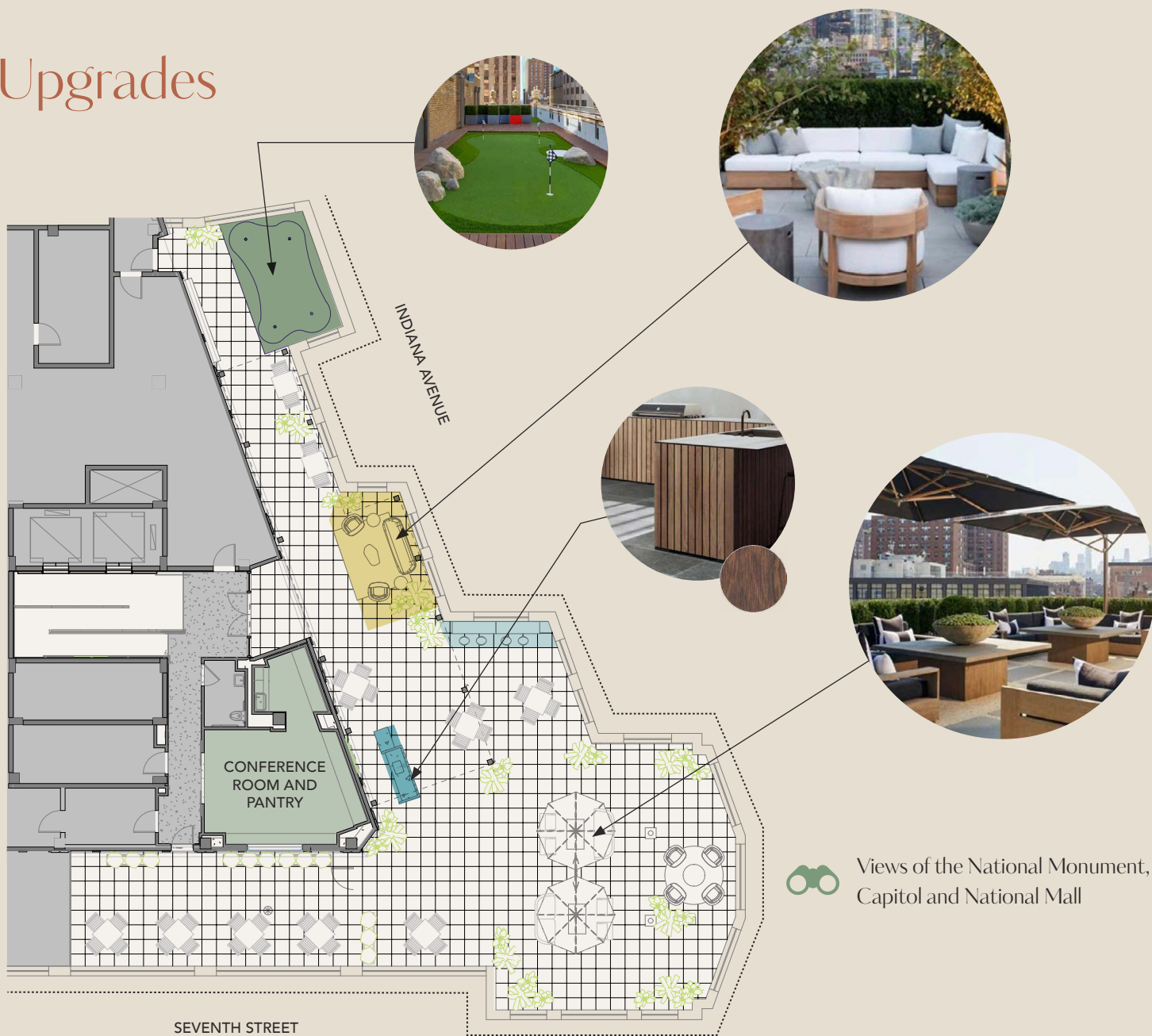
Coming Soon!

- Putting Green ●

- Meeting/Lounge Area ●

- Dining Bar ●

- Outdoor Bar ●



Views of the National Monument,
 Capitol and National Mall

----- WINDOW LINE



The Opportunity



Discover Your Space

AVAILABILITIES

Floor 8 | Suite 800 | 6,927 RSF | As-Built | Available 5/1/25

Floor 6 | Full Floor | 3,000-12,000 RSF | Spec Suites Coming Soon!

Floor 5 | Suite 525 | 5,312 RSF | New Spec Suite

Floor 4 | Full Floor | 3,000 - 18,190 RSF | Whitebox Condition

Floor 3 | Suite 325 | 4,314 RSF | As-Built | Available 8/1/24

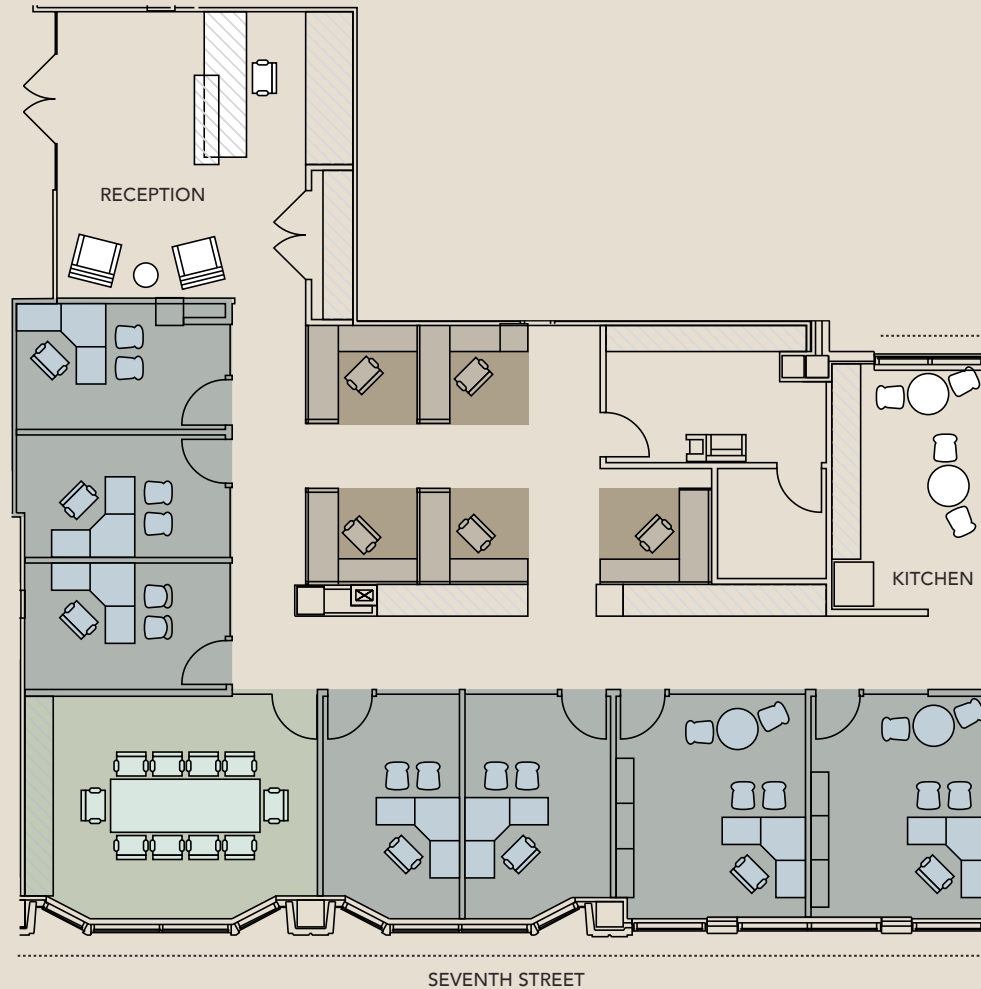
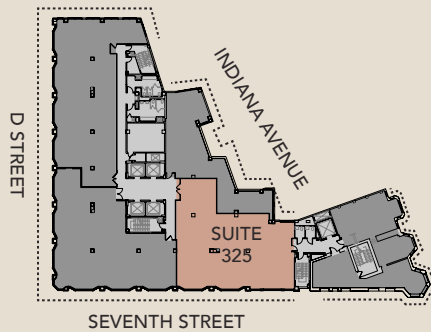
THIRD FLOOR

Suite 325 | 4,314 SF

AS-BUILT - AVAILABLE 8/1/24

5	Workstations	●
7	Offices	●
1	Conference Room	●

- + Direct elevator exposure
- + Prime window line
- + Efficient, office intensive suite



.....
WINDOW LINE

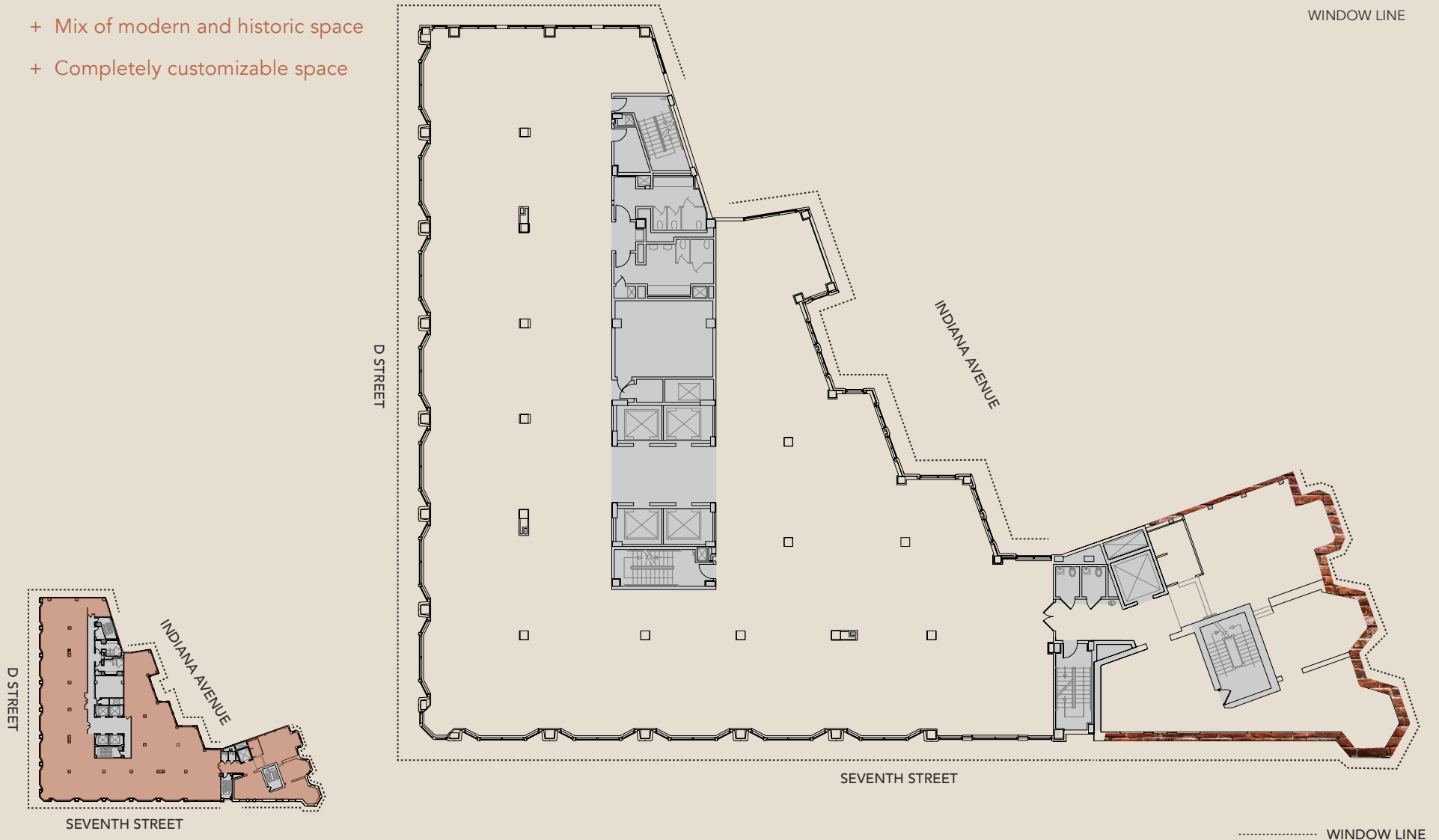
.....
WINDOW LINE

FOURTH FLOOR 3,000 - 18,190 SF

WHITEBOX CONDITION - FULL FLOOR OPPORTUNITY

- + Mix of modern and historic space
- + Completely customizable space

View the historic side!



FIFTH FLOOR

Suite 525 | 5,131 SF

NEW SPEC SUITE

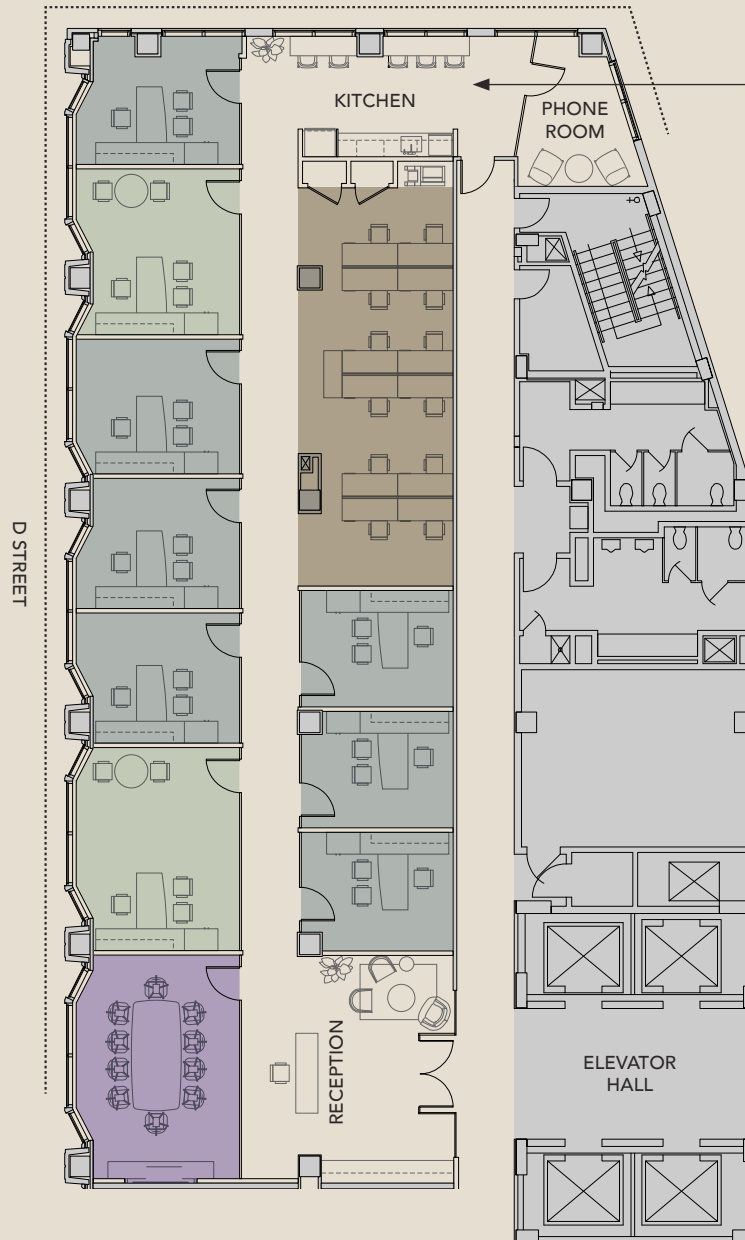
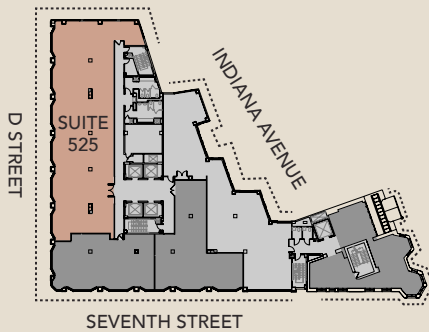
- 12 Workstations ●

- 7 Private Offices ●

- 2 Executive Offices ●

- 1 Conference Room ●

- + Direct elevator exposure
- + Prime window line



..... WINDOW LINE

SIXTH FLOOR
3,000-12,000 SF
SPEC SUITES COMING SOON!

+ Adjacent to new conference facility and Ben Franklin Club

View the historic side!

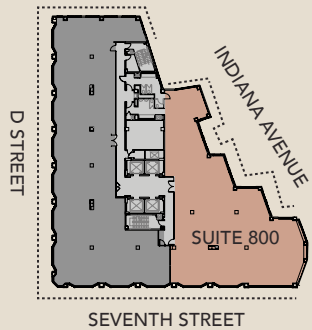


EIGHTH FLOOR
Suite 800 | 6,927 SF

AS-BUILT - AVAILABLE 5/1/25

24	Workstations	○
9	Offices	●
2	Conference Rooms	●

- + Direct elevator exposure
- + Prime window line



325

SEVENTH

Carroll
Cavanagh

Senior Vice President

+1 202 55 5586

carroll.cavanagh@cbre.com

Emily
Eppolito

Vice President

+1 202 585 5695

emily.eppolito@cbre.com

Dimitri
Hajimihalis

Vice President

+1 202 585 5611

dimitri.hajimihalis@cbre.com

CBRE

© 2023 CBRE, Inc. All rights reserved. This information has been obtained from sources believed reliable but has not been verified for accuracy or completeness. CBRE, Inc. makes no guarantee, representation or warranty and accepts no responsibility or liability as to the accuracy, completeness, or reliability of the information contained herein. You should conduct a careful, independent investigation of the property and verify all information. Any reliance on this information is solely at your own risk. CBRE and the CBRE logo are service marks of CBRE, Inc. All other marks displayed on this document are the property of their respective owners, and the use of such marks does not imply any affiliation with or endorsement of CBRE. Photos herein are the property of their respective owners. Use of these images without the express written consent of the owner is prohibited.